

Experience University Research At UCI



UCI

A photograph of Barack Obama speaking at a podium. He is wearing a blue graduation gown with gold stripes on the sleeves. The background is a blue banner with the text "UC Irvine" repeated in large, yellow, sans-serif letters. The text is slightly out of focus, emphasizing the speaker.

#1

**Best University
Under 50 Years Old**
Times Higher Education

#9

Public University
US News & World Report

#50

**Best University
in the World**
*Shanghai Jiao Tong
University*

#1

**“Cool School”
for Sustainability**
Sierra Magazine
2 consecutive years

Key Facts

UCI

31,551

Total students
Fall 2015

3

Nobel-Prize winning
faculty

92

Undergraduate
majors

>100

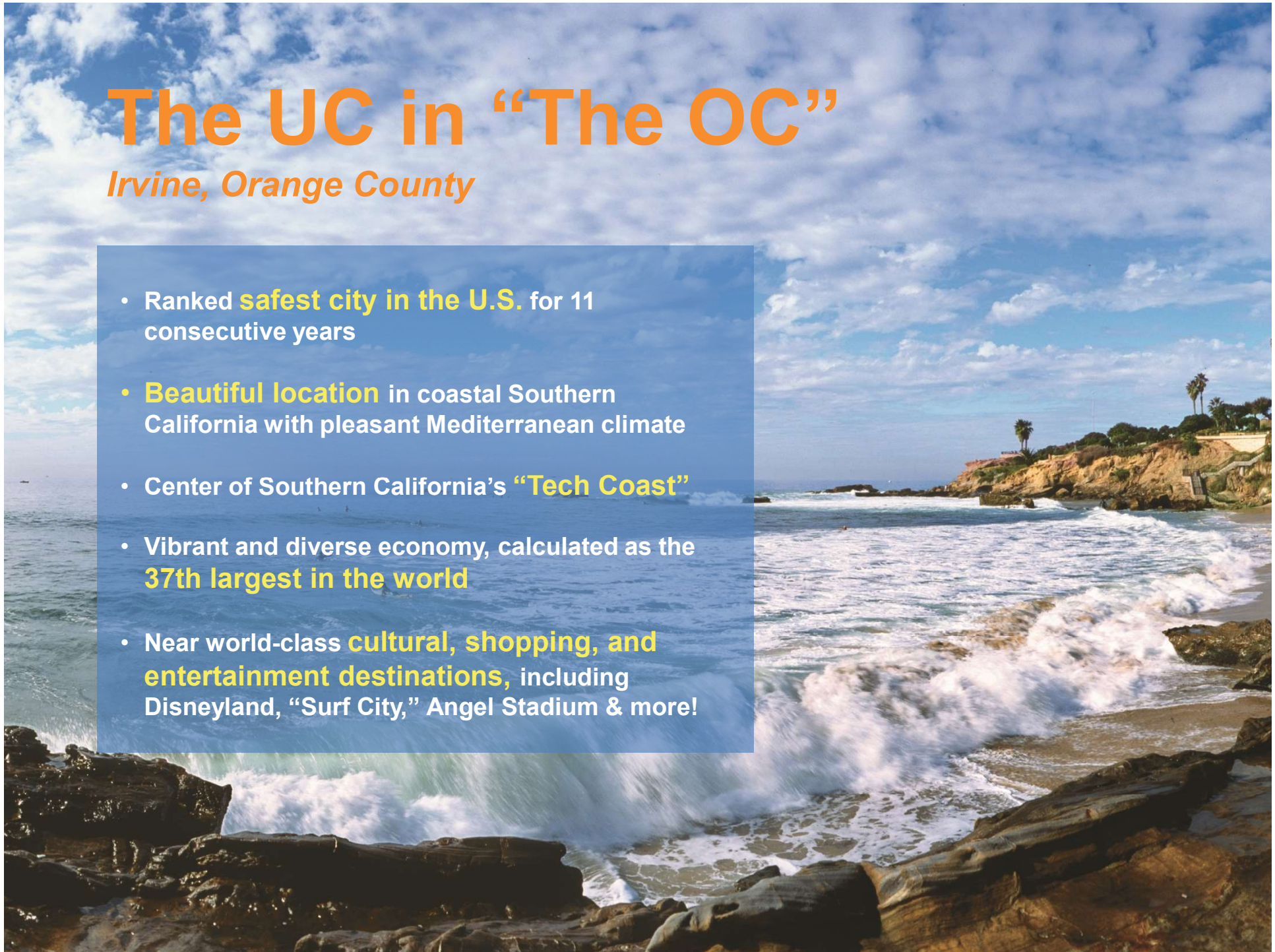
Inventions
generated each
year

102, 000 applications were received for **6,000** spots in Fall 2017, making UCI *the fastest-growing* and one of the *most competitive* UC campuses.

The UC in “The OC”

Irvine, Orange County

- Ranked **safest city in the U.S.** for 11 consecutive years
- **Beautiful location** in coastal Southern California with pleasant Mediterranean climate
- Center of Southern California’s **“Tech Coast”**
- Vibrant and diverse economy, calculated as the **37th largest in the world**
- Near world-class **cultural, shopping, and entertainment destinations**, including Disneyland, “Surf City,” Angel Stadium & more!



UCI



UCI



UCI

CONTEMPORARY ARTS CENTER

THEATER

ucaArts ucaArts ucaArts

LEED

ucaArts

ucaArts

- **Experience University Research (EUR)** is a three-week academic **RESEARCH** program offered by various Facilities at University of California, Irvine, for students from cooperating universities.
- EUR students can take classes in **Engineering, Biology, Social Ecology, Math, Computer Science, and Business**, all taught by UC Irvine faculty and field experts.
 - Some classes may not be available both sections
- EUR students will also learn about American university **RESEARCH** practices, culture and admissions and improve academic study skills as they complete university-level assignments.

EUR PROGRAM BENEFITS

- **Gain** an international academic and **RESEARCH** experience
- **Study** at a TOP 10th public U.S. university
- **Meet** students from other universities and American students through socio-cultural activities
- **Learn** about the U.S. culture and society

EUR COURSE PACKAGES

- There are four courses in each package
- Each week is about 24 hours of class time
- Classes are interactive and often include group work and discussions
- Evaluation may include assignments, group projects, papers, exams, and participation marks
- Courses do not receive UCI credit but credit is suggested to be granted by the student's home university (at its discretion)

Some Faculties Profiles

John M. Whiteley

Professor of Social Ecology
Ed.D. Harvard University

Specializations:

moral development, late adolescence to early adult development, social ecology of peace

John Stupar

Lecturer, Director of the Ethics Institute

Specializations:

Schmid College of Science and Technology; Mathematics and Computer Science

SHIN LIN

Professor, Developmental & Cell Biology, Biomedical Engineering, Professor of Physiology and Biophysics, School of Medicine

Specializations:

Complementary and alternative medicine

EUR PROGRAM FEE







The package fee per student is \$5,500 USD for the program and it includes:

- Four courses
- Course materials
- Health insurance
- Group airport transfers
- Shared accommodation **July 08th-28th, August 05th-25th**, 2018
- Orientation and farewell events
- Socio-cultural activities (optional trips may require an additional fee)

Daily Schedule

9:00am-10:20am	Academic Presentation Skills
10:30am-11:50am	Research Methodology
12:00pm-1:00pm	Lunch
1:00pm-4:00pm	University Elective/ Conversation Partners

Sample Calendar

SUNDAY	MONDAY	TUESDAY	WEDNESDAY	THURSDAY	FRIDAY	SATURDAY
<p>July 8</p> <p>ARRIVAL AT LAX</p> <p>Homestay Orientation</p>	<p>9</p> <p>WELCOME TO UCI! Program Orientation 9:00am – 12:00pm</p> <p>Welcome Lunch & Campus Tour 12:00pm – 2:00pm</p> <p>PRESENTATION Graduate School Admissions 2:00pm – 3:00pm</p>	<p>10</p> <p>Academic Presentation Skills 9:00am – 10:20am</p> <p>Research Methodology 10:30am – 11:50am</p> <p>Intro to Environmental Analysis & Design 1:00pm – 4:00pm</p>	<p>11</p> <p>Academic Presentation Skills 9:00am – 10:20am</p> <p>Research Methodology 10:30am – 11:50am</p> <p>Conversation Partner Meeting 1:00pm – 4:00pm</p>	<p>12</p> <p>Academic Presentation Skills 9:00am – 10:20am</p> <p>Research Methodology 10:30am – 11:50am</p> <p>Intro to Environmental Analysis & Design 1:00pm – 4:00pm</p>	<p>13</p> <p>Academic Presentation Skills 9:00am – 10:20am</p> <p>Research Methodology 10:30am – 11:50am</p> <p>Conversation Partner Meeting 1:00pm – 4:00pm</p>	<p>14</p> <p>SAMPLE ACTIVITY</p>  <p>Disneyland or California Adventure 9:00am – 12:00pm</p>
<p>15</p> <p>SAMPLE ACTIVITY</p>  <p>L.A. Tour 9:00am – 9:00pm</p>	<p>16</p> <p>Academic Presentation Skills 9:00am – 10:20am</p> <p>Research Methodology 10:30am – 11:50am</p> <p>PRESENTATION American Culture 2:00pm – 3:00pm</p>	<p>17</p> <p>Academic Presentation Skills 9:00am – 10:20am</p> <p>Research Methodology 10:30am – 11:50am</p> <p>Intro to Environmental Analysis & Design 1:00pm – 4:00pm</p>	<p>18</p> <p>Academic Presentation Skills 9:00am – 10:20am</p> <p>Research Methodology 10:30am – 11:50am</p> <p>Conversation Partner Meeting 1:00pm – 4:00pm</p>	<p>19</p> <p>Academic Presentation Skills 9:00am – 10:20am</p> <p>Research Methodology 10:30am – 11:50am</p> <p>Intro to Environmental Analysis & Design 1:00pm – 4:00pm</p>	<p>20</p> <p>Academic Presentation Skills 9:00am – 10:20am</p> <p>Research Methodology 10:30am – 11:50am</p> <p>Conversation Partner Meeting 1:00pm – 4:00pm</p>	<p>21</p> <p>SAMPLE ACTIVITY</p>  <p>Universal Studios 9:00am – 10:00pm</p>
<p>22</p> <p>SAMPLE ACTIVITY</p>  <p>Outlet Shopping 10:00am – 5:00pm</p>	<p>23</p> <p>Academic Presentation Skills 9:00am – 10:20am</p> <p>Research Methodology 10:30am – 11:50am</p> <p>Academic Advising 2:00pm – 4:00pm</p>	<p>24</p> <p>Academic Presentation Skills 9:00am – 10:20am</p> <p>Research Methodology 10:30am – 11:50am</p> <p>Intro to Environmental Analysis & Design 1:00pm – 4:00pm</p>	<p>25</p> <p>Academic Presentation Skills 9:00am – 10:20am</p> <p>Research Methodology 10:30am – 11:50am</p> <p>Conversation Partner Meeting 1:00pm – 4:00pm</p>	<p>26</p> <p>Academic Presentation Skills 9:00am – 10:20am</p> <p>Research Methodology 10:30am – 11:50am</p> <p>Intro to Environmental Analysis & Design 1:00pm – 4:00pm</p>	<p>27</p> <p>Academic Presentation Skills 9:00am – 10:20am</p> <p>Research Methodology 10:30am – 11:50am</p> <p>Graduation Luncheon 1:00pm – 3:00pm</p> 	<p>28</p> <p>Housing Check-Out</p> <p>DEPART FOR LAX</p> 



- Group style housing/co-ed building/ same-gender bedroom
- Fully-furnished with an equipped kitchen
- Basketball and volleyball courts available
- Wireless internet and local phone in bedroom and cable TV/DVD in common room
- Approximately 10-15 minute walk to classrooms from most locations

UCI

Campus Dormitory



YOUR EUR CONTACTS

Inquiries from Asia:

Ming CAI

International Marketing Coordinator

Tel: (778) 863-9613

Email: ming.cai@unx.uci.edu

WeChat: 247895687

For all other inquiries:

Karl Kottman

Manager, Custom Designed Programs

UCI Division of Continuing Education

+1-949-824-9061 (Voice)

+1-949-824-8065 (Fax)

See you in California!

